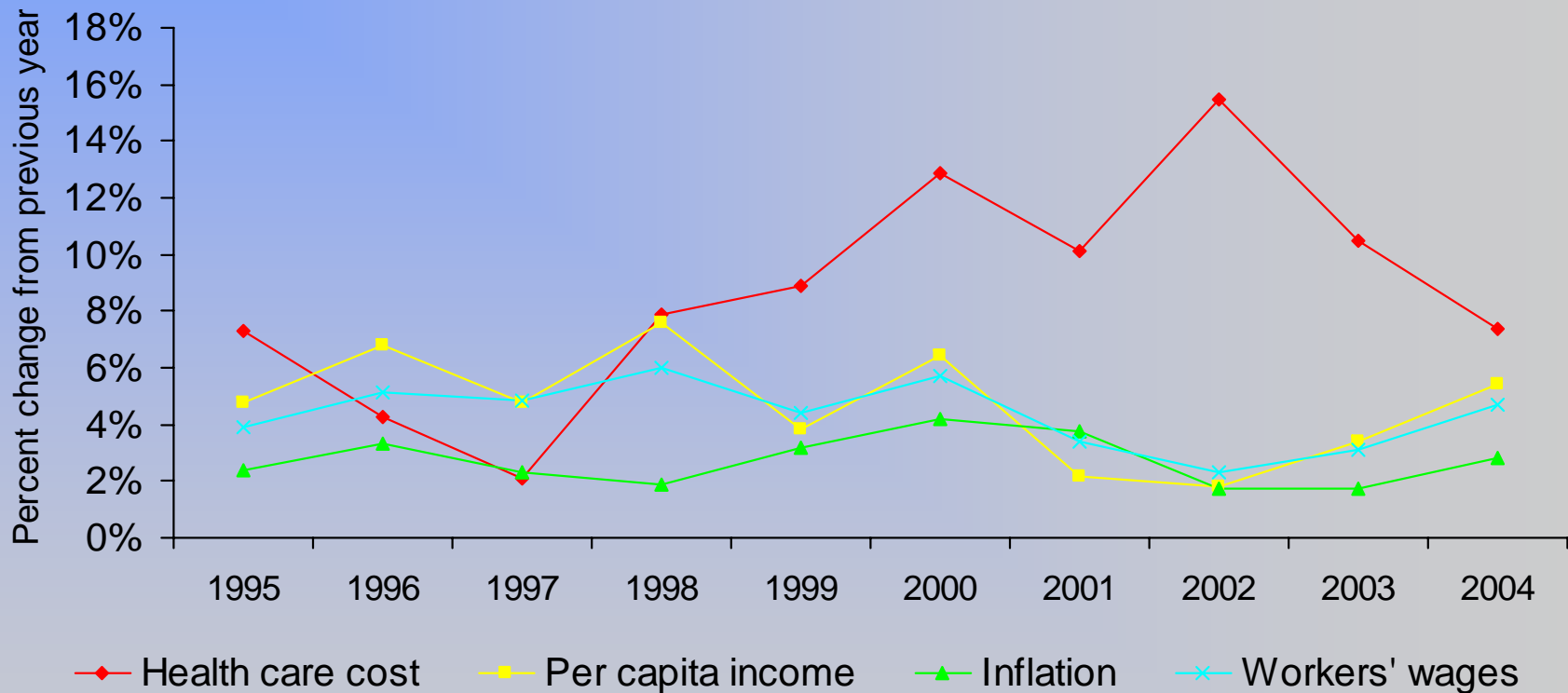


Key Minnesota Health Care Cost and Economic Indicators, 1995 to 2004



Notes: health care cost is MN privately insured spending on health care services per person, and does not include enrollee out of pocket spending for deductibles, copayments/coinsurance, and services not covered by insurance..

Sources: Health care cost data from Minnesota Department of Health, Health Economics Program; per capita personal income from U.S. Department of Commerce, Bureau of Economic Analysis; inflation data from U.S. Bureau of Labor Statistics (consumer price index); workers' wages from MN Department of Employment and Economic Development.